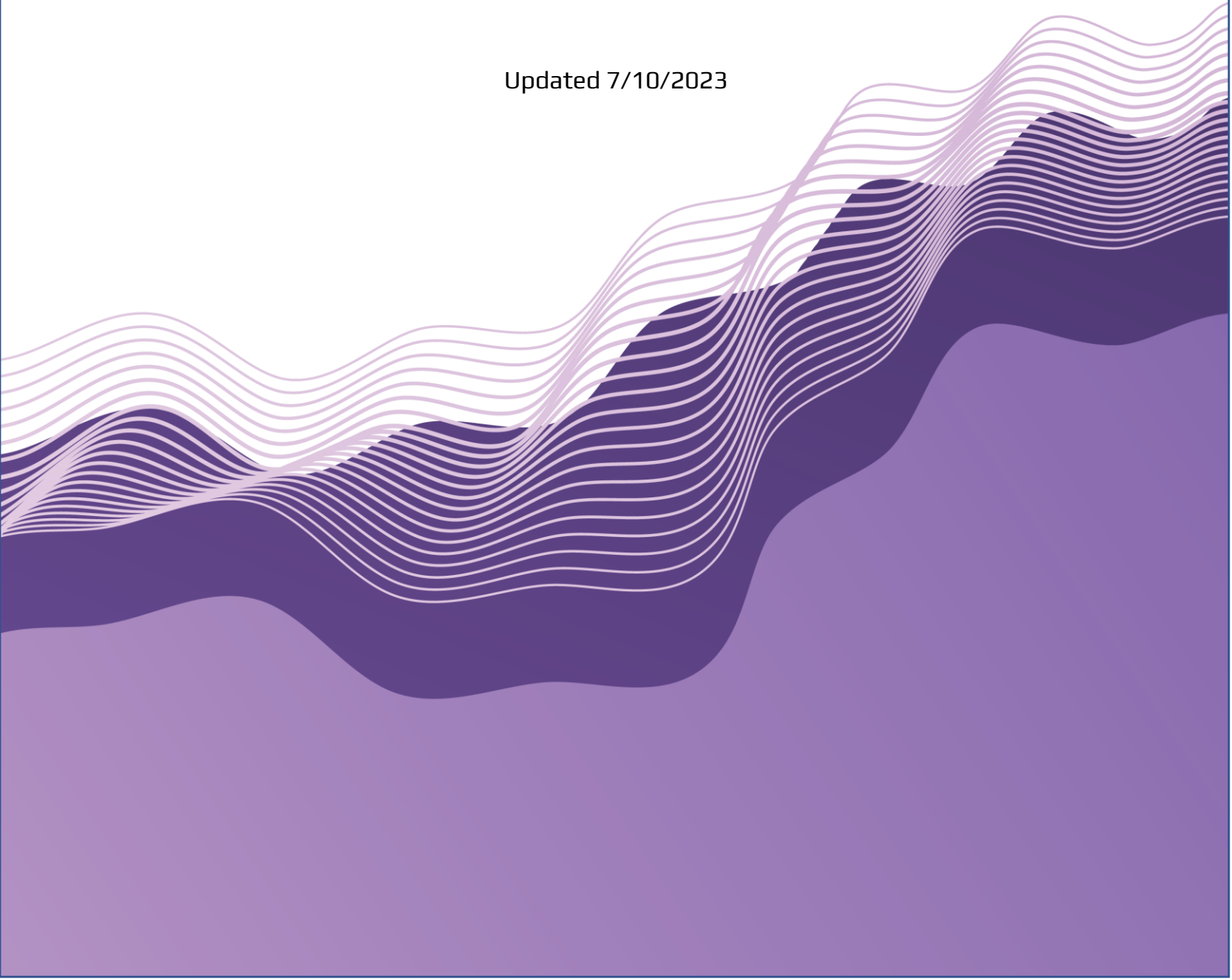


# Smart Tiles

## Quick Start Guide

Updated 7/10/2023



## Copyright

Copyright © 2020 - 2023 Vitextra SIA. All rights reserved.

All trademarks and registered trademarks mentioned in this document are property of their respective owners.

### **Company information:**

Email: [info@vitextra.com](mailto:info@vitextra.com)

Website: [vitextra.com](http://vitextra.com)

# Contents

Copyright.....	2
Contents.....	3
About this Guide .....	4
Product Overview .....	4
Installation.....	5
Software Requirements .....	5
Deployment Requirements .....	5
Client Requirements.....	5
Required Permissions .....	5
Installation package.....	5
Installation procedure.....	6
Activation .....	6
Setup and Configuration .....	7
Adding the Web Part to a Page.....	7
Web Part Configuration .....	8
Editing Tiles .....	10

## About this Guide

This Quick Start Guide allows you to install and configure Smart Tiles web part for basic operation. The guide is designed for administrators, consultants, and all IT professionals who are looking to utilize the product's basic functionalities.

## Product Overview

The Smart Tiles web part allows users to create visually appealing and user-friendly navigation menus for SharePoint sites. With the web part, users and content editors can add and personalize tiles, representing various pages or sections of site, and arrange them in a dynamic grid that adapts to different screen sizes.

By utilizing the web part, users can navigate through their site seamlessly, enhancing the overall user experience and simplifying the discovery and access of important information.

Key features of the Smart Tiles:

- Responsive grid of tiles
- Customizable tiles (size, color, font)
- Predefined icon sets:
  - Fluent UI icons
  - Microsoft 365 Applications
  - Azure Services
  - File Types

# Installation

## Software Requirements

## Deployment Requirements

SharePoint Online (Microsoft 365)

### **! Important**

The Smart Tiles web part does not support SharePoint on-premises instance.

## Client Requirements

Desktop browsers:

- Microsoft Edge (latest released version)
- Mozilla Firefox (latest released version)
- Google Chrome (latest released version)
- Apple Safari (latest released version)

Mobile browses:

- Latest version of Microsoft Edge or Chrome on Android 4.4 or later.
- Microsoft Edge, Chrome or Safari on iOS10 or later

### **Note**

Internet Explorer 11 and Edge IE compatibility mode are not supported.

We recommend exploring Microsoft Edge (Chromium) as the replacement for Internet Explorer 11.

## Required Permissions

To perform the installation procedure, you must have the Tenant Admin role assigned to you.

## Installation package

There are two delivery channels of the Smart Tiles solution:

Copyright © 2020 - 2023 Vitextra SIA. All rights reserved.

[vitextra.com](https://vitextra.com)

- Vitextra Download Center (<https://vitextra.com/en/downloads>)
- Microsoft AppSource<sup>1</sup>

 **Tip**

The Download Center provides updates and new features as soon as they are ready. The publication of updates in the AppSource occurs with a delay of about two weeks due to the verification process by Microsoft.

## Installation procedure

Please refer to the following knowledge base article:

<https://vitextra.com/en/support/kb/10035>

## Activation

After you have purchased a license for the Smart Tiles, you can assign it to your SharePoint instance.

 **Note**

You need a license for each tenant<sup>2</sup> where the web part installed. Number of users does not affect the licensing.

For more details about subscription management and license assignment refer the knowledge base article:

<https://vitextra.com/en/support/kb/10037>

---

<sup>1</sup> Microsoft App Source is a global online marketplace with applications and services created for Microsoft 365, Dynamics 365, Power BI, Power Platform, and other Microsoft services. AppSource allows you to purchase and deploy applications in the organization's tenant.

<sup>2</sup> A Microsoft 365 tenant is a dedicated virtual instance of the Microsoft 365 services. The tenant holds the organization's information, such as users and domains (Azure AD), configurations, subscriptions, and services. The organization receives a tenant by signing up for Microsoft 365 services.

# Setup and Configuration

## Adding the Web Part to a Page

After you install the package the Smart Tiles web part appears in the gallery:

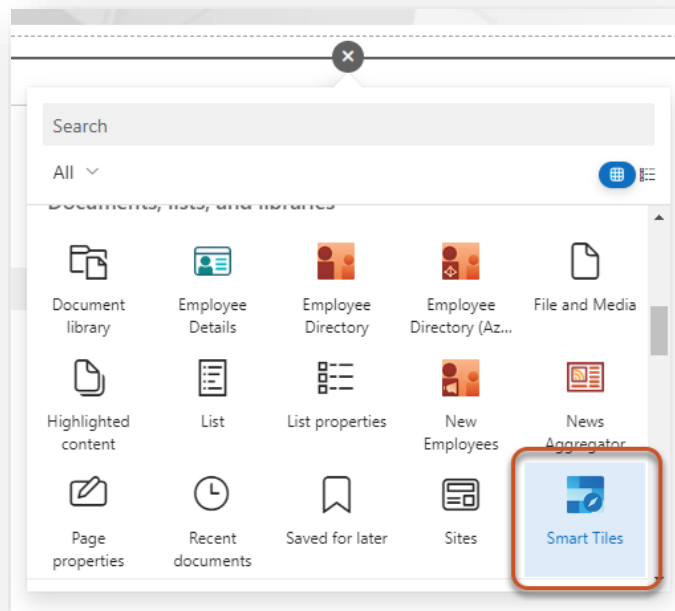


Figure 1. Web Part Gallery

## Web Part Configuration

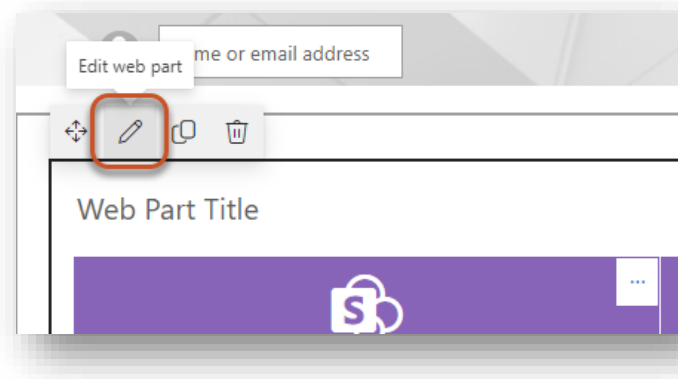


Figure 2. Web Part Edit button

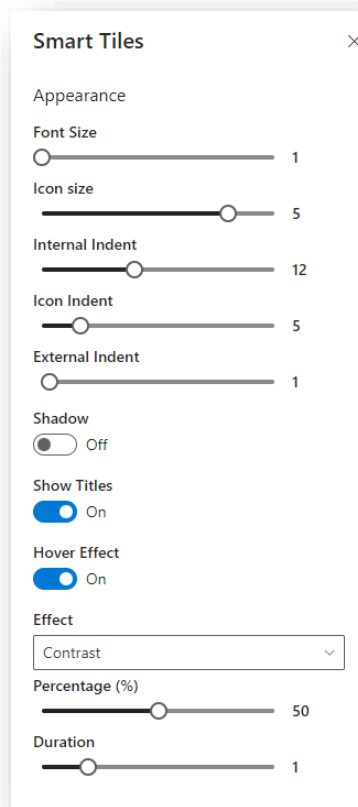


Figure 3. Web Part Properties

The Smart Tiles web part provides set of options for customizing appearance of tiles.



*Table 1. Web Part Properties*

Property	Description
<b>Font Size</b>	Number from 1 to 7 corresponding to the font size of the title.
<b>Icon Size</b>	Number from 1 to 6 corresponding to the icon size.
<b>Internal Indent</b>	Number from 0 to 30 (pixels). Space within the tile.
<b>Icon Indent</b>	Number from 0 to 30. Indent between icon and title.
<b>External Indent</b>	Number from 0 to 30. Space between tiles.
<b>Shadow</b>	Yes/No. Show or hide drop shadow of the icon.
<b>Show Titles</b>	Yes/No. Show or hide title.
<b>Hover Effect</b>	Yes/No. Effect when hovering the cursor over a tile.
<b>Effect</b>	Picker, one of the supported effects: <ul style="list-style-type: none"> <li>• Brightness</li> <li>• Contrast</li> <li>• Grayscale</li> <li>• Hue Rotate</li> <li>• Color Inverting</li> <li>• Opacity</li> <li>• Saturation</li> <li>• Sepia</li> </ul>
<b>Percentage</b>	Number from 0 to 100. Value to be applied to the selected effect if applicable.
<b>Duration</b>	Seconds from 0 to 5. Duration of the hover effect transition.

The image below shows the properties of the web part that affect the tile size and space between them.

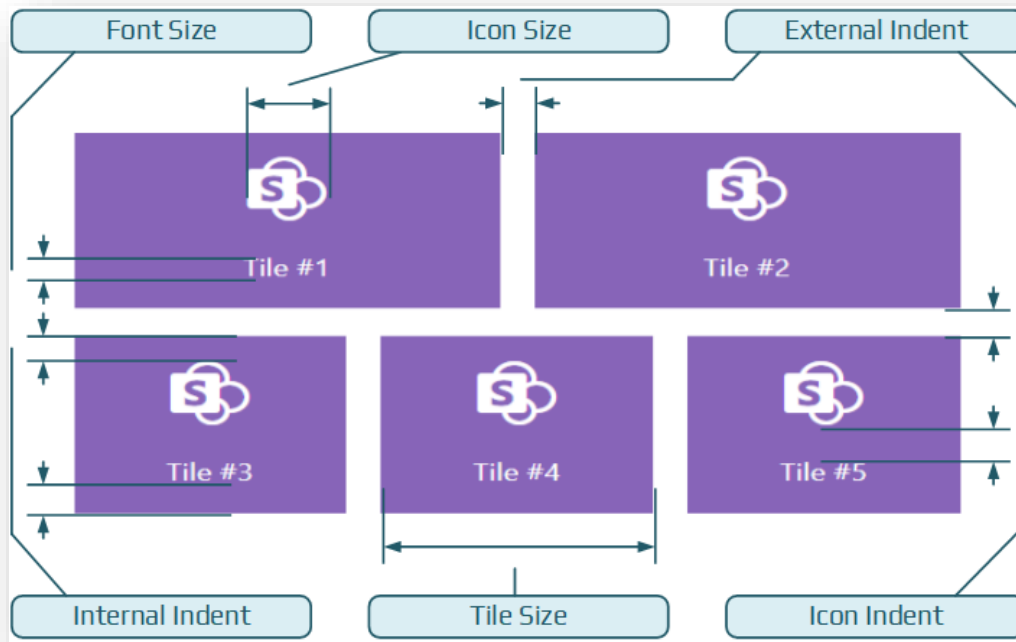


Figure 4. Tile size properties

**Tip**

The properties of the web part affect only the height of the tile, the width of the tile depends on its size and the width of the web part itself.

The width of a tile depends only on the selected size of it. Table below contains possible tile size options and the corresponding minimum tile width.

Table 2. Tile size and corresponding minimum width.

Size	Minimum Tile Width
<b>Extra Small</b>	15%
<b>Small</b>	30%
<b>Medium</b>	45%
<b>Large</b>	65%
<b>Extra Large</b>	80%
<b>Full Width</b>	100%

## Editing Tiles

To add a new tile, open the page in edit mode and select the **Add Tile** button.

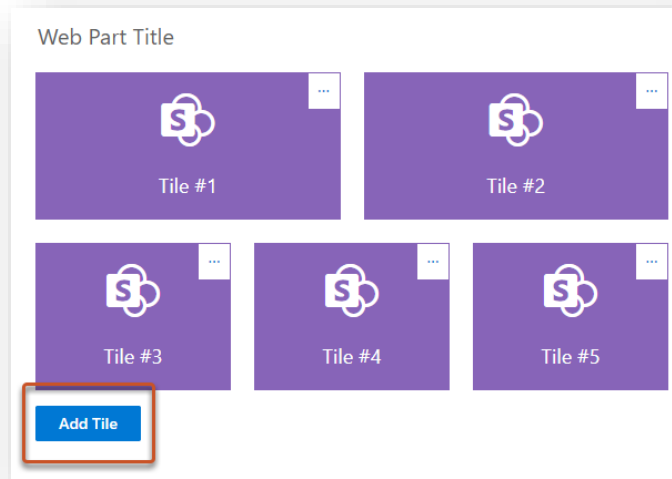


Figure 5. Add Tile button

To edit properties of a tile or remove it select ... button to open the context menu.

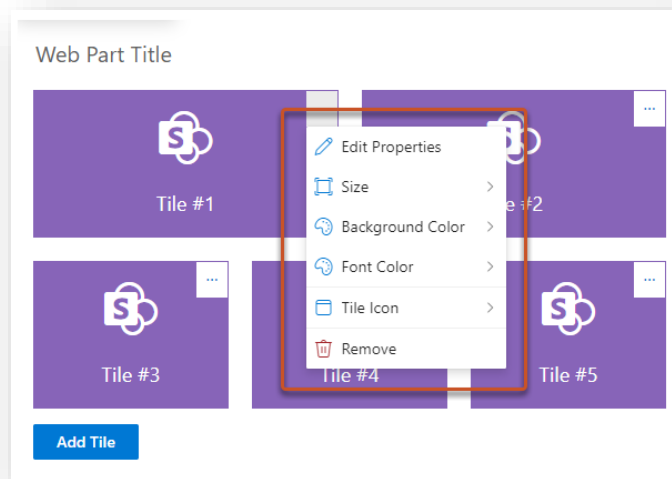
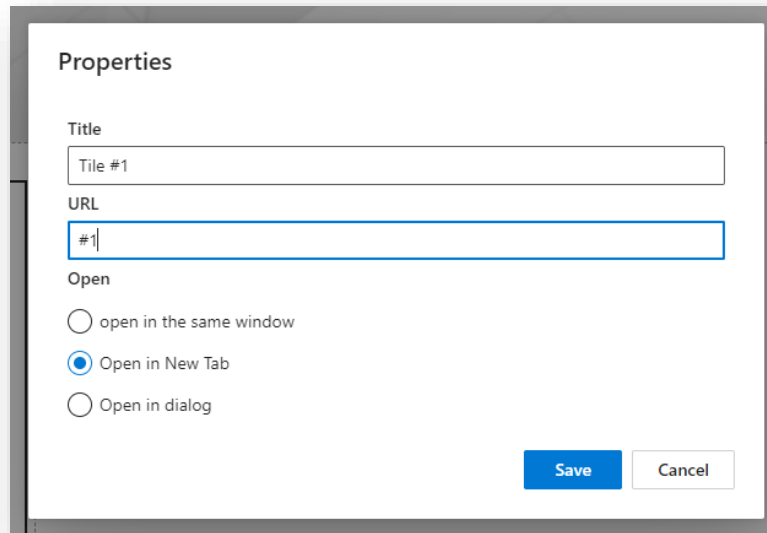


Figure 6. Tile context menu

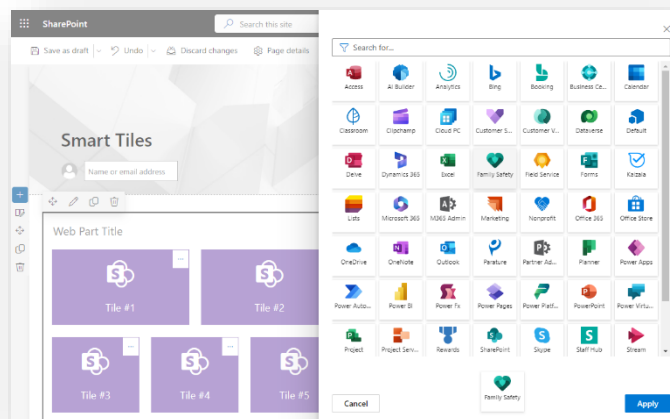
Each tile has the following properties: title, navigation URL, and target option to define where to open the link.



*Figure 7. Tile properties dialog*

The Smart Tiles web part provides four predefined icon sets:

- Office UI Fabric Icons
- Microsoft 365 Apps
- Azure Services
- File Types



*Figure 8. Microsoft 365 icon set*